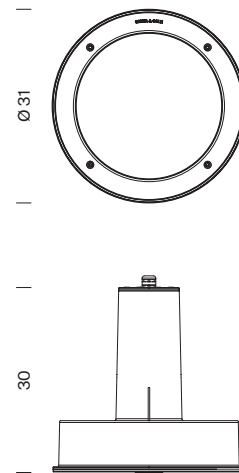
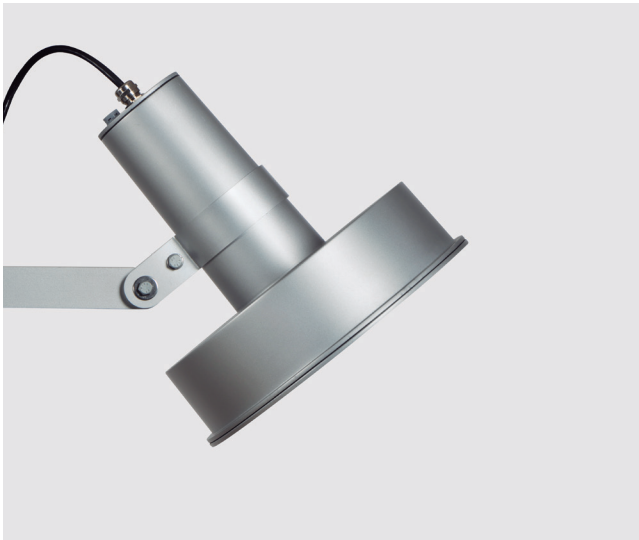


Arne Floodlight (indirect lighting)

Santa & Cole Team, 2013



Sizes in cm



Materials: Powder-coated finish aluminium injection luminaire.
Anodised aluminium extrusion internal heat sink.
Tempered optical glass seal and vulcanised silicone water-resistant seals.
Stainless steel safety screws.

Colours: light grey (RAL 9006).
(other colours available to order)

Size (cm): Ø 31 x 30

Weight (kg): 6.5

Surface exposed to wind (m²): 0.13

Installation: Suitable for pole attachment using a range of fastening accessories (indirect lighting).
Component delivered in two parts: floodlight and fastening attachments.
(For further information about accessories, log onto the website www.santacole.com).
The Arne product range also incorporates an extensive family of symmetrical and street lighting units.
(For further information about Arne floodlight, log onto the website www.santacole.com).

Applicable standards: UNE-EN 60529, UNE-EN 60598, UNE-EN 55015, UNE-EN 61000, UNE-EN 50102, UNE-EN 62031
UL 1598, UL 8750, (file E-336377)

Protection levels: IP66 (protection from dust ingress and high-pressure water jets), suitable for wet locations, IK08 (protection against external mechanical impacts)

Electrical rating: Class I (CE), Non-class II (UL)

Light source: High-efficiency optical unit with 18 or 36 LEDs

Nominal lamp power (W): 17 - 78

System power (W): 21 - 85

Operating current (mA): 350, 500 or 700

Colour temperature (K°): 3000 / 4000

Luminous flux and efficacy of the floodlight:

3000°K
CRI min80

4000°K
CRI typ70

Light distribution:

Symmetrical: Wide Spot Reflector

ULOR (Upper Light Output Ratio): 10%

Arne Floodlight (indirect lighting)

Santa & Cole Team, 2013

Power supply: constant current driver

Regulation:

1-10V / DALI / Header flux regulation / Programmable automatic regulation

The LED luminaire may be regulated using a number of differing interfaces. These controls allow specific, individual control of light, reducing energy consumption in a sustainable manner.

Constant light output (CLO)

Assures a constant lumen output from the luminaire throughout its lifetime.

Power factor (cos ϕ):

N° LEDs	Current (mA)	P (W) 100%, CLO 80%	P (W) 70%, CLO 80%
18	350	0.87	0.82
	500	0.92	0.88
	700	0.98	0.97
36	350	0.95	0.91
	500	0.97	0.95
	700	0.98	0.97

Operating voltage: 220-240V 50Hz (CE) / 120-277V 60Hz (UL)

Recommended wire:

0.6 / 1 kV 3 x 1.5 mm²

0.6 / 1 kV 5 x 1.5 mm² (prog.)

Temperature operating range (°C): between -25 and 30 (700 mA)

Lifetime: TM21 L70 (10k) > 60,000 h

Thanks to an optimised thermal design, the luminous flux is maintained up to 70% after 60,000 h.

Under exceptional cases when the ambient temperature is excessive, the output may be reduced using the (NTC) active control system that ensures the right operating temperature is maintained.